

REMY

SH142764-BU-ST

Inspired by vintage furniture pulls, Remy has a clean and considered cylindrical form for a timeless look. Crafted from solid brass or powder-coated aluminum, Remy features soft curves and a pared-down silhouette for a sturdy and satisfying feel.

FINISHES

Butterscotch Satin

DIMENSIONS / SPECS

Height: 1"

Width/Diameter: 1"

Product Weight: 1lb

Extension: 1"

Knob Size: 1"

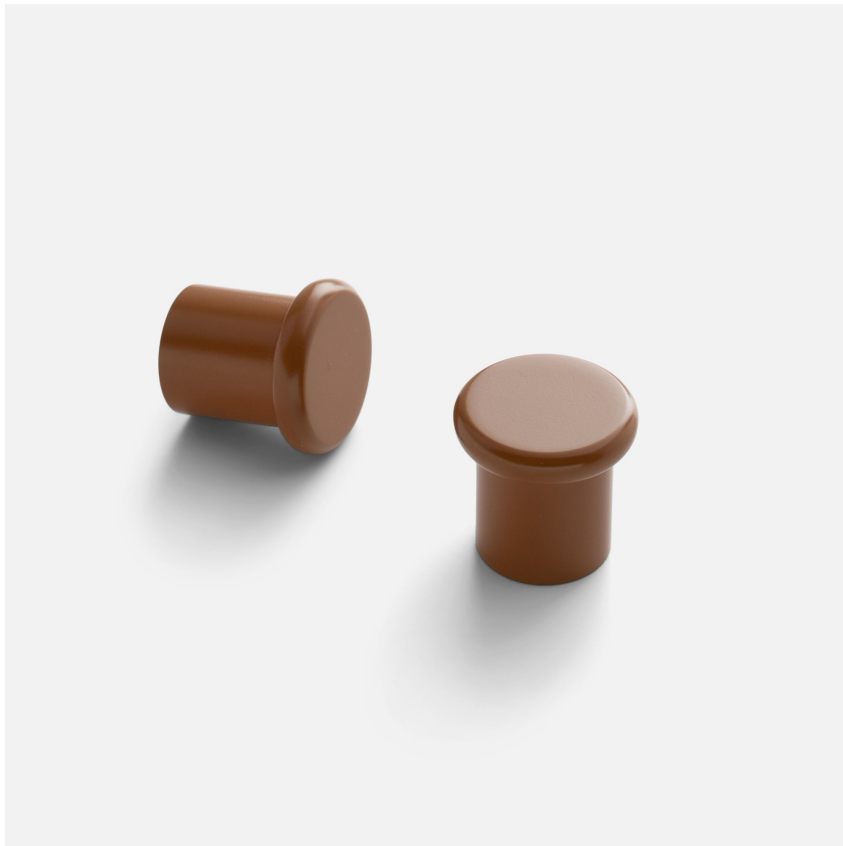
SHIPPING

Carton 1: 0" x 0" x 0"

Carton 1 Weight: 1lb

Shipping Method: Ground

Country of Origin: CN



SCHOOLHOUSE