

# SARAI

L3229-AGB/CMT

Featuring an irregular rectangular base with a geometric pattern, the Sarai table lamp is a sculptural beauty. The base is playfully adorned with a series of rectangular and square ledges, finished in a soft moonstone granite glaze. The large white linen drum shade contrasts the planar base while adding to the overall visual weight.

\*Due to the one-of-a-kind nature of the medium, exact colors and patterns may vary slightly from the image shown.

## FINISHES

AGED BRASS w/ Ceramic Moonstone Granite  
Coastal Suitable Finish (EPM): No

## DIMENSIONS

Height: 29.25"  
Width/Diameter: 19"  
Canopy/Backplate: 6"  
Product Weight: 12.6lb  
Canopy/Backplate Shape: Square  
Sloped Ceiling Compatible: No  
Living Finish: No  
Uplight Only: No

## Shade

Shade 1: Linen  
Shade 1 Finish: White  
Shade 1 Top Width: 17.5"  
Shade 1 Bottom L/W: 0" / 19"  
Shade 1 Height: 12.5"  
Shade 2: Linen  
Shade 2 Finish: White  
Shade 2 Top Width: 16.5"

## ELECTRICAL

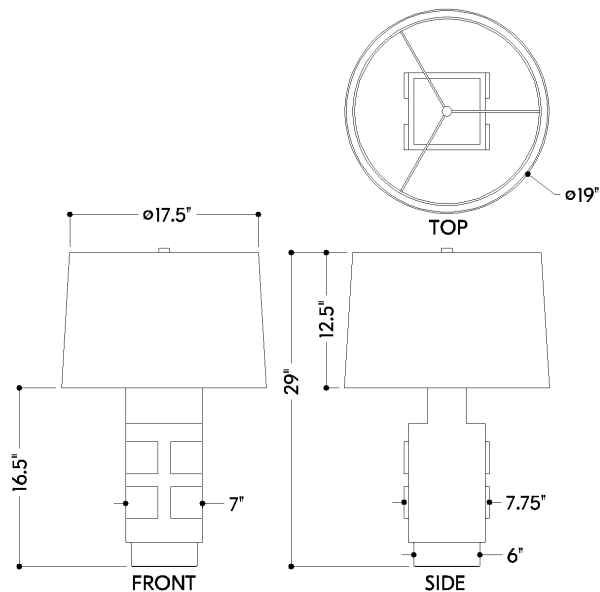


### Bulb 1

Bulb Included: No  
Socket: E26 Medium Base  
Bulb Type: A19  
Max Wattage: 15  
Bulb Quantity: 1  
Bulb Included: No  
Wire Length: 96"  
Cord Type: SPT-2 BLACK FABRIC  
Switch Type: FULL RANGE DIMMER ON  
SOCKET  
Gem Box Required (2"x3"): No  
Dark Sky: No

## SHIPPING

Carton 1: 21" x 21" x 35"  
Carton 1 Weight: 27lb  
Shipping Method: Ground  
Country of Origin: VN



HUDSON VALLEY  
LIGHTING GROUP

| hvlgroup.com | 1.800.814.3993

REVISED 3.11.2022