

# MARIEL

H866101-AGB/SNY

In a modernization of a traditional style, the shaded silhouette of Mariel utilizes the harp holding the metal shade as a design detail. The curve of the harp complements the socket cup with a halo-like effect. A rounded finial in Aged Brass provides a finishing touch on top of the shade, which comes in a Soft Navy or Soft White hue.

## FINISHES

### AGED BRASS

Coastal Suitable Finish (EPM): No

## DIMENSIONS

Height: 12"

Width/Diameter: 9.75"

Canopy/Backplate: 4.75"

Product Weight: 2.29lb

Extension: 10.75"

Top to Center: 9.5"

Canopy/Backplate Shape: Round

Sloped Ceiling Compatible: No

Living Finish: No

Uplight Only: No

## Shade

Shade 1: Metal

Shade 1 Finish: Soft Navy

Shade 1 Top Width: 2.25"

Shade 1 Bottom L/W: 0" / 9.75"

Shade 1 Height: 3.25"

## ELECTRICAL



### Bulb 1

Bulb Included: No

Socket: E12 Candelabra Base

Bulb Type: G16.5

Max Wattage: 8

Bulb Quantity: 1

Bulb Included: No

Wire Length: 7"

Gem Box Required (2"x3"): No

Dark Sky: No

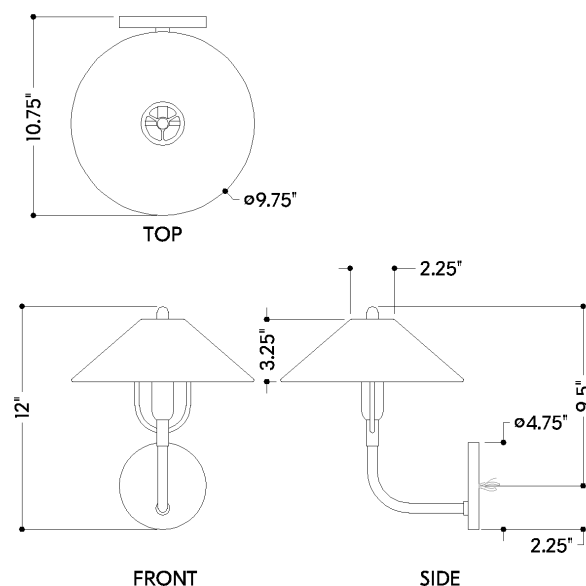
## SHIPPING

Carton 1: 17" x 9" x 13"

Carton 1 Weight: 4lb

Shipping Method: Ground

Country of Origin: VN



HUDSON VALLEY  
LIGHTING GROUP

| [hvlgroup.com](http://hvlgroup.com) | 1.800.814.3993

REVISED 3.11.2022