

# MERRICK

6015-DB

Smooth styling and superior functionality are Merrick's signature traits. We conceal the fixture's wiring behind a full-length solid brass backplate. Merrick's shade and arms can be adjusted to customize light direction.

## FINISHES

DISTRESSED BRONZE (DB)

POLISHED NICKEL (PN)

## DIMENSIONS

Height: 3.5"

Width/Diameter: 17.5"

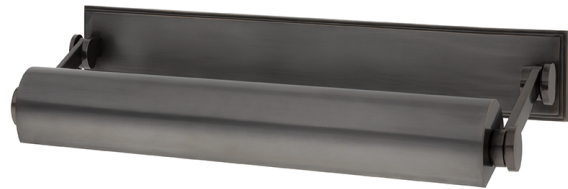
Minimum Height: 3.5"

Maximum Height: 8.75"

Canopy/Backplate: 0"

Hanging Type:

Product Weight: 6lb



## GLASS

Attachment: N/A

Glass 1:

Glass 2:

## LAMPING



### Bulb 1

Bulb Included: No

Socket: E26 Medium Base

Bulb: T10-5.5 • 2 • 60 Watt Max

## SHIPPING

Carton 1: 20" x 13" x 7"

Carton 1 Weight: 8lb

Shipping Method: Ground